

National Survey on Day Surgery in Denmark

Hans Bredgaard Christensen

Medical student, Copenhagen University

Centre for Anaesthesiological Research

Department of Anaesthesiology, Zealand University Hospital Køge



Centre for
Anaesthesiological
Research



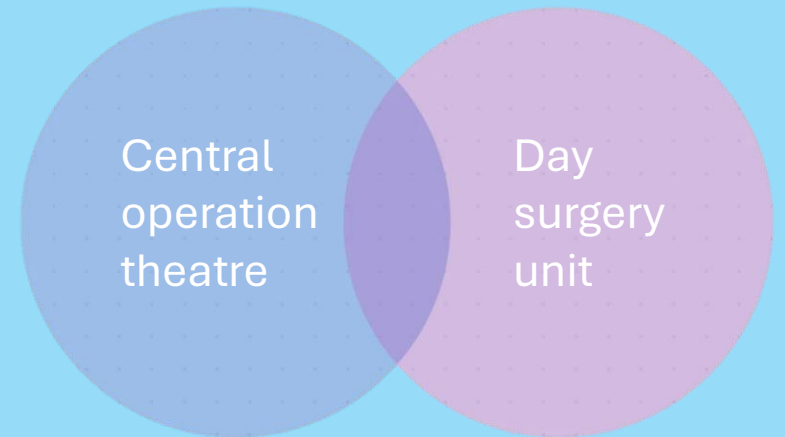
DANSK SELSKAB
FOR DAGKIRURGI

REGION ZEALAND
ZEALAND UNIVERSITY HOSPITAL



Introduction

- Use of day surgery is expanding
 - Data from IAAS in 2009
 - *Toftgaard 2011*
- Latest report from the Danish Health Authorities (1999)



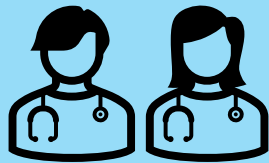
Method



Web-based survey administrated through e-mail



All public hospitals with a Day Surgery Unit and 4 major private hospitals



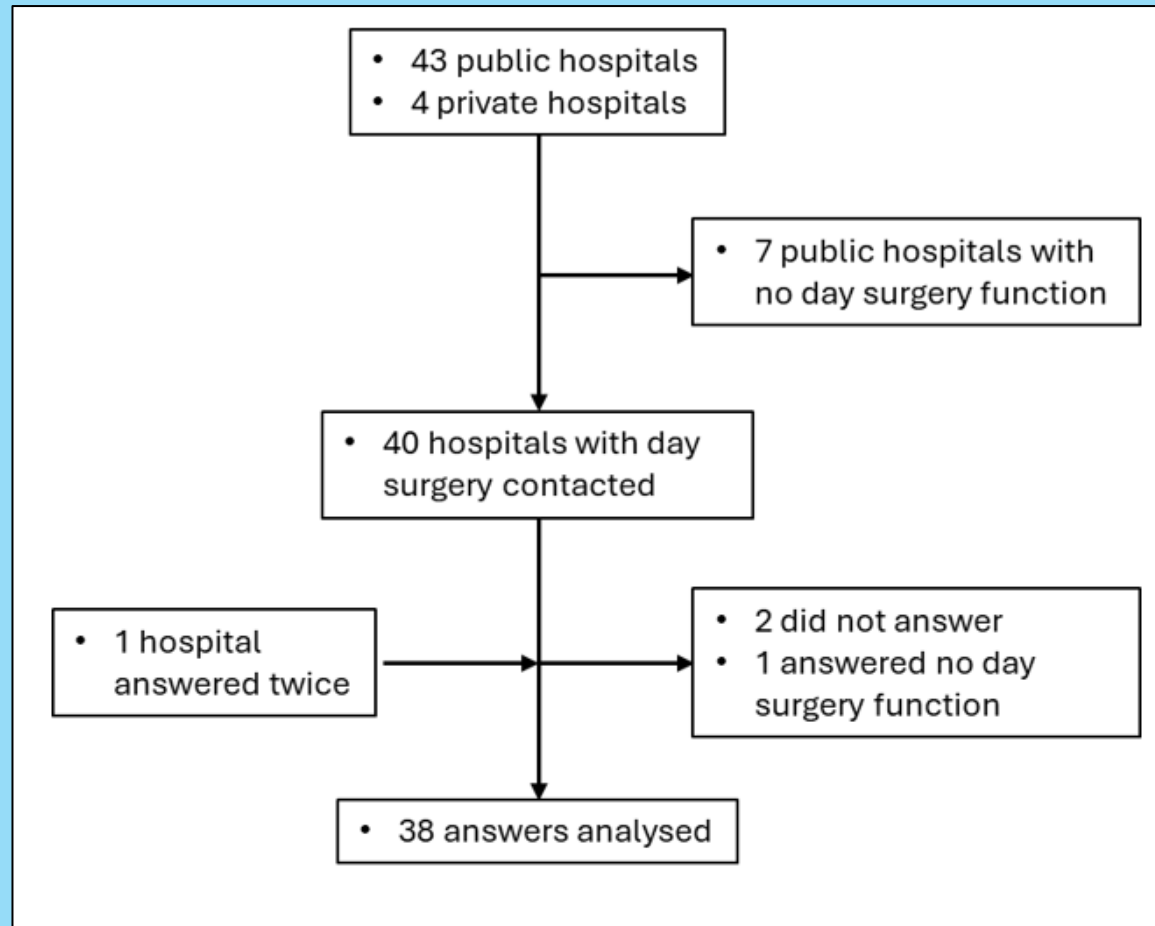
Clinicians responsible for running a day surgery unit



Organisational structure, anaesthesia methods, post-anaesthesia care and surgical procedures



Results



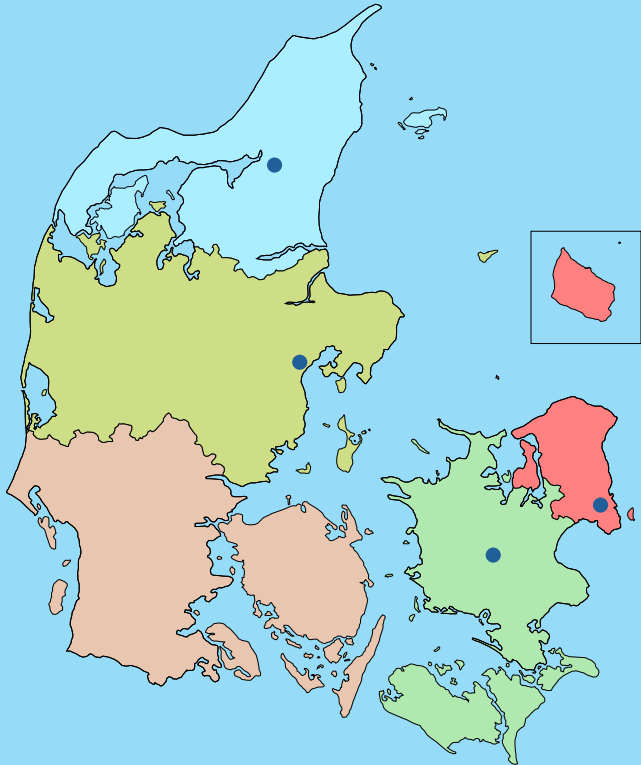
Thanks

Tak

 **DANSK SELSKAB
FOR DAGKIRURGI**



Results



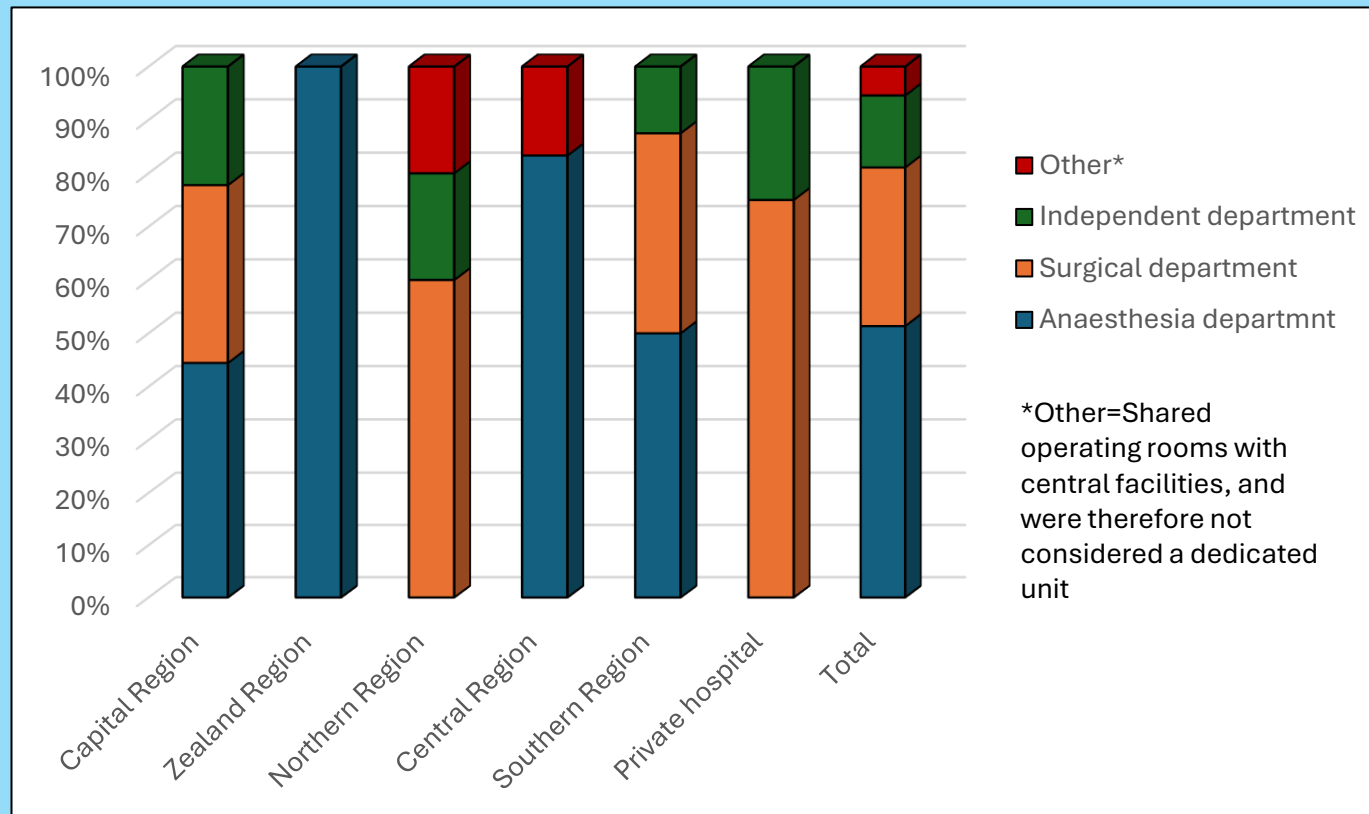
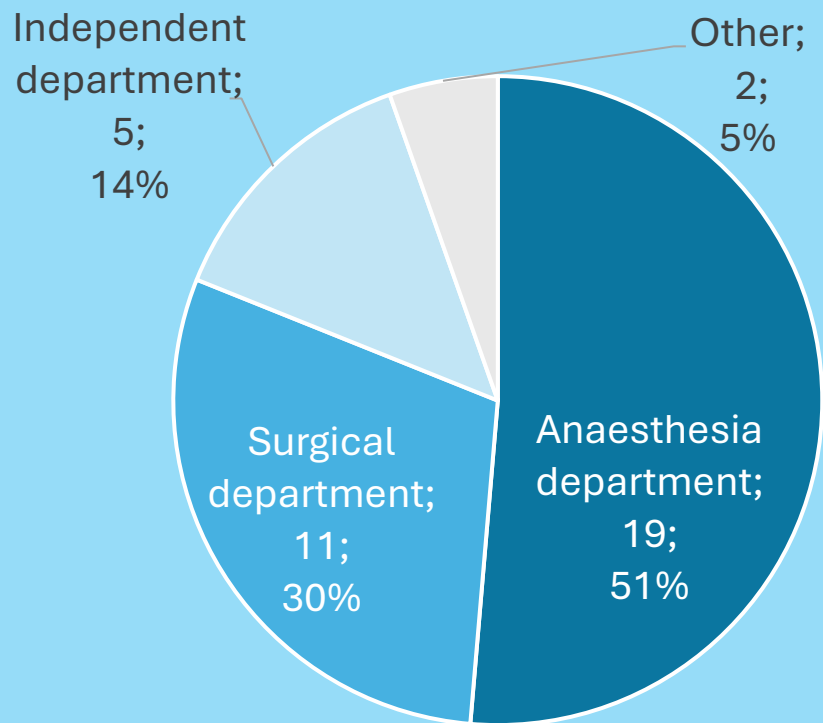
- Northern region: 5/7
- Central region: 6/6
- Southern region: 8/8
- Capital region: 9/9
- Zealand region: 6/6
- Private hospitals: 4/4

- Total answer rate: 38/40 (95%)



Organisation

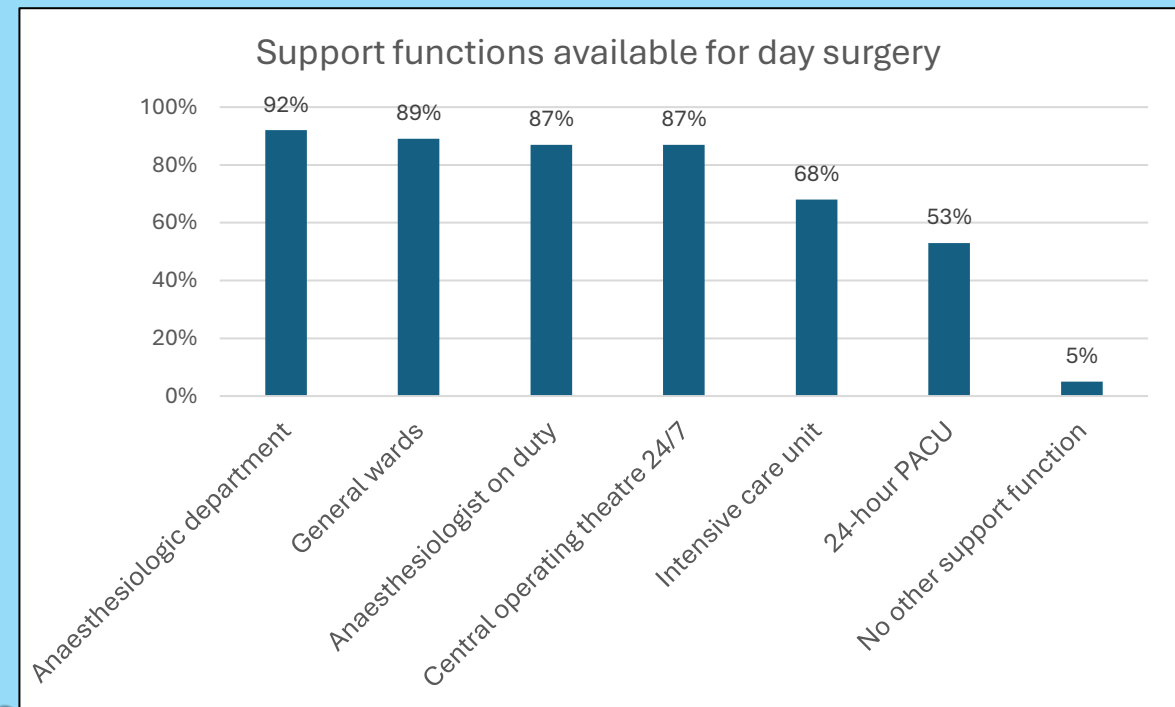
Organisational placement



Organisation

| Organisation | n |
|--|-------------|
| Total answer rate | 38 units |
| Operating rooms pr. week/unit | 25 (10-103) |
| Surgery average end (weekdays) | |
| <i>Before 3 PM</i> | 17 (46%) |
| <i>Between 3 and 4</i> | 12 (32%) |
| <i>After 4 PM</i> | 8 (22%) |
| Post anaesthesia care unit for Day Surgery | 29 (76%) |
| Post anaesthesia care unit beds available | 12 (2-50) |
| Paediatric surgery | 33 (87%) |

| Discharge criteria, n (%) | |
|---------------------------|----------|
| DASAIM criteria | 34 (89%) |
| Custom criteria | 3 (8%) |
| No criteria | 1 (3%) |



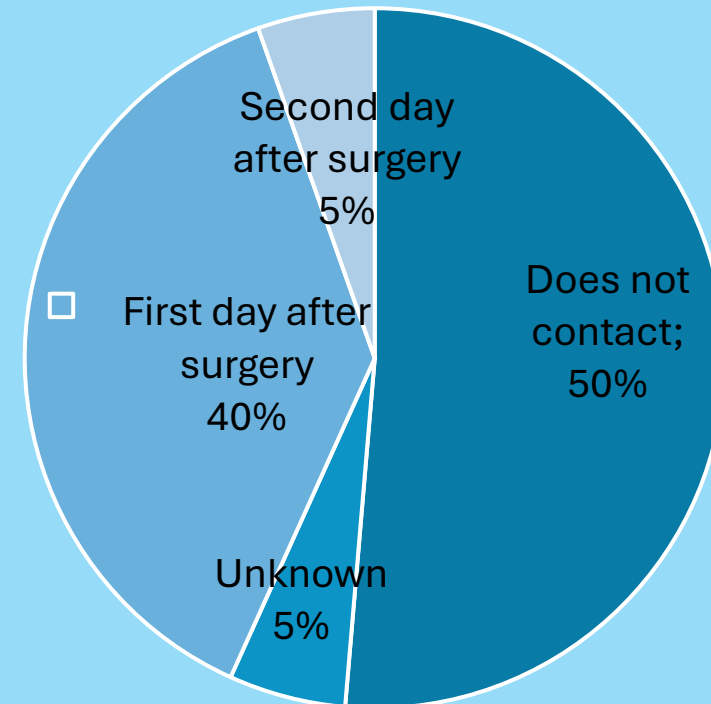
Results

Top 5 surgical specialities in Day Surgery Units

1. Orthopaedic surgery (89%)
2. Gastrointestinal surgery (82%)
3. Gynaecology (68%)
4. Urology (39%)
5. Ear, Nose and Throat (ENT) surgery (37%)

| Standard preoperative medicine | n (%) |
|--------------------------------|----------|
| Paracetamol | 34 (89%) |
| NSAID | 30 (79%) |
| Opioids | 8 (21%) |
| Antiemetic | 13 (34%) |
| Dexamethasone (as analgesics) | 9 (24%) |
| No medicine given | 4 (11%) |

Contact after day surgery



Results

| Orthopaedic procedures n (% of N) | N=34 |
|-----------------------------------|---------|
| Arthroscopies | 31 (91) |
| Soft tissue surgery | 25 (74) |
| Foot surgery | 25 (74) |
| Hand surgery | 23 (68) |
| Fractures | 21 (62) |
| Arthroplasty | 17 (50) |

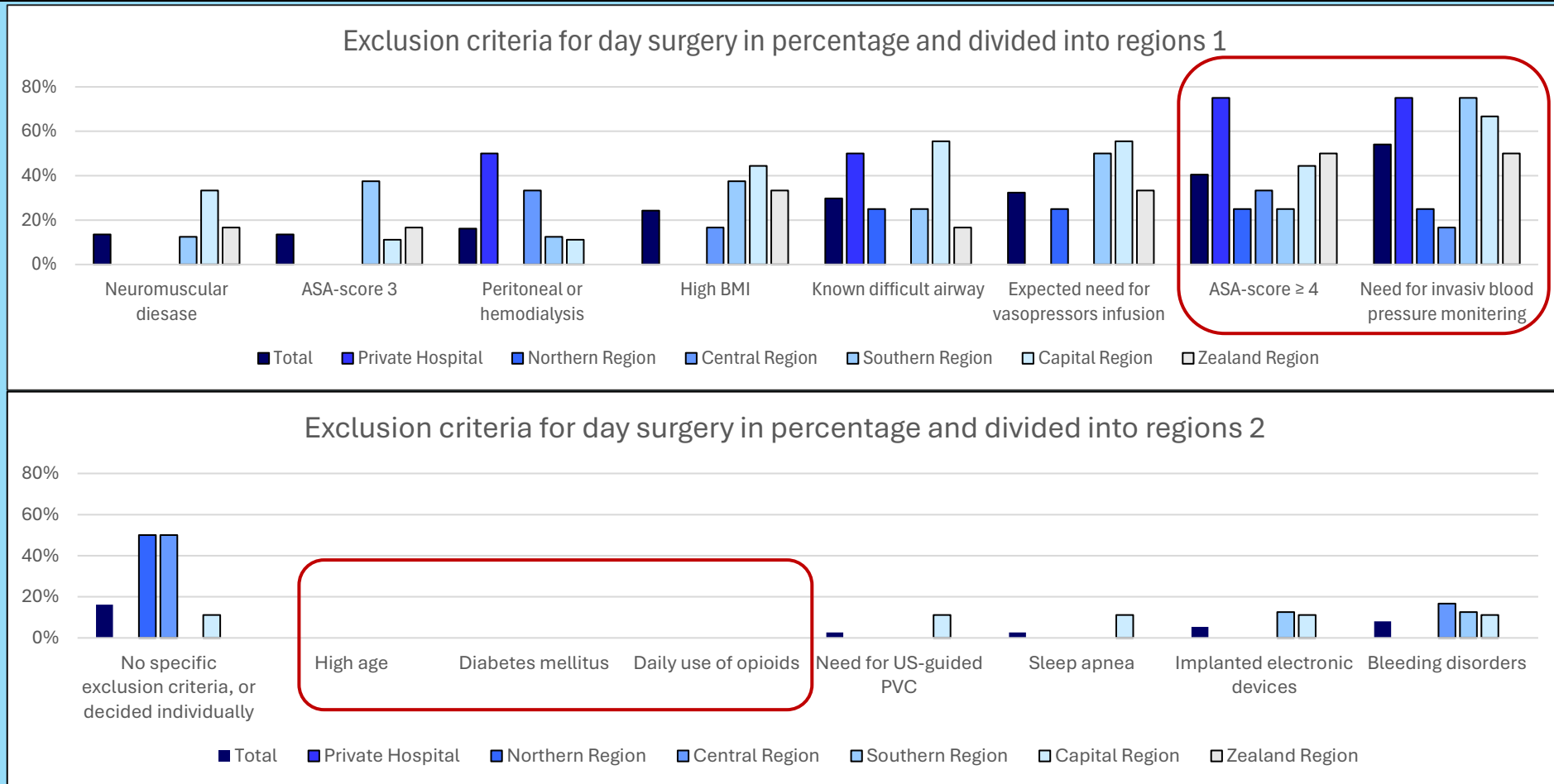
| Gastrointestinal surgery n (% of N) | N=31 |
|-------------------------------------|---------|
| Anal surgery | 26 (84) |
| Inguinal hernia repair | 26 (84) |
| Laparoscopic cholecystectomy | 25 (81) |
| Pilonidal cyst surgery | 22 (71) |

| Gynaecology n (% of N) | N=26 |
|--|---------|
| Hysteroscopy | 23 (88) |
| Laparoscopic sterilization | 22 (85) |
| Surgery for cystocele/rectocele repair | 22 (85) |
| Surgical abortion | 21 (81) |
| Dilation and curettage (D&C) of the uterus | 18 (69) |

| Urology n (% of N) | N=15 |
|---|---------|
| Circumcision | 11 (73) |
| Insertion/removal of JJ stent | 11 (73) |
| Transurethral resection of the prostate (TUR-P) | 10 (67) |
| Testicular surgery | 9 (60) |



Exclusion criteria



Discussion

- French survey from 2017 *Beaussier et al.*
 - 4 out of 5 had a day surgery unit, with 17% being a department
 - 13% had a PACU for day surgery
 - Almost all contacted patients after surgery

- European survey from 2013 *Stomberg et al.*
 - 87% had a dedicated day surgery unit
 - 1 in 10 had age as an exclusion criteria, and 40% had high BMI
 - Half contacted patients after surgery



Discussion

- Strengths
 - High answer rate
 - Across all of Denmark
- Limitations
 - Focused on public hospitals
 - Day surgery outside the units
 - Reported practices
 - Not specific patient courses



Conclusion

- Increased number of day surgery units
- About half of the day surgery units belong to an anaesthesiology department
- Average of 25 rooms is available per unit/week across Denmark
- A wide regional variation in exclusion criteria
- Main exclusion criteria: need for invasive blood monitoring and ASA-score ≥ 4
- No exclusions based on age, diabetes, or opioid use
- About half of the units do not contact patients after surgery



Perspective

- Further research
 - Collection of patient data and satisfaction
 - National inception cohort study
 - Follow up calls of day surgery
 - Exclusion criteria

